



**51 Belmar Avenue Altona VIC**

3  1  1 

Comfortable family home with direct access to Ford Reserve. Conveniently located, just a short stroll to the Early Learning Hub, choice of schools, Harrington Square shopping centre and train station.

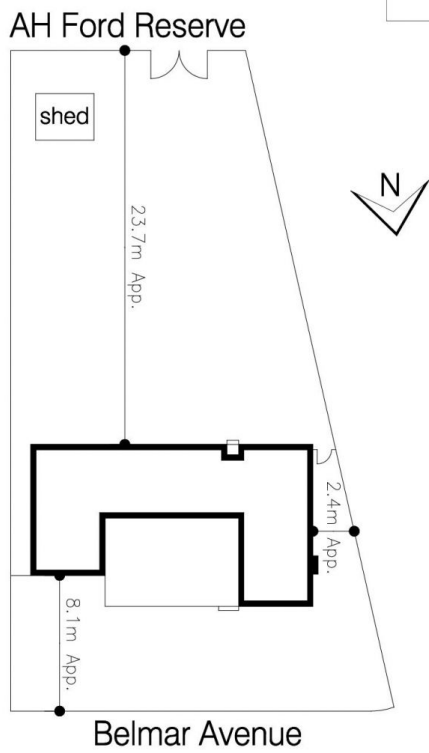
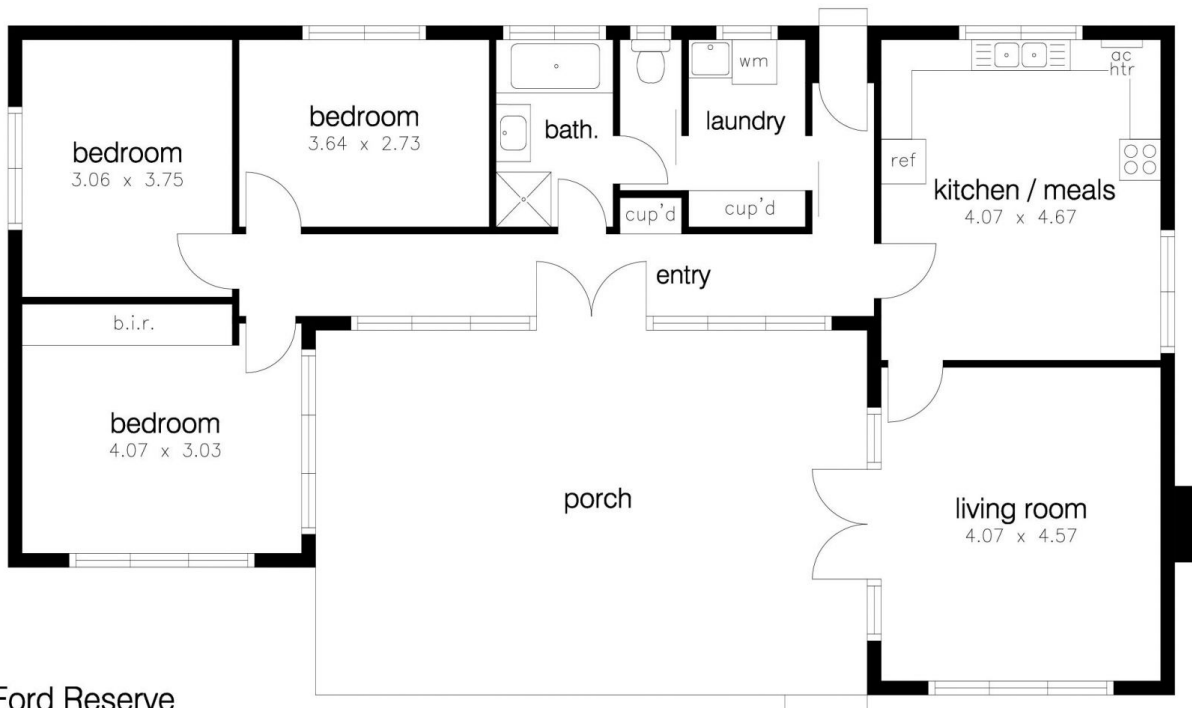
**Type** : House  
**Land Size** : 732 sqm  
**View** : <https://www.barlows.com.au/lease/vic/west/altona/residential/house/8029973>

The unique configuration of this home offers:

- \* Sunfilled lounge
- \* Large Kitchen and meals area
- \* 3 Bedrooms with wardrobes
- \* Air conditioning and ducted heating
- \* Large back garden with direct access to Ford Reserve



**Maxine Alderson**  
03 9398 3888



51 Belmar Avenue, Altona