






16 High Street Seaholme VIC

3  2  2 

Locate yourself in one of the most sought-after pockets of Seaholme/Altona.

Set on this 310m² approx. corner site, this type of home is definitely a rare find.

The home was constructed approx. 20 years ago and was designed to provide its occupant open plan oversized living areas & huge windows to allow natural light to flow through. Upstairs is a lovely use of space with high ceilings over the retreat/study & all three bedrooms are a great size. the master is exceptional with its large corner window overlooking the front yard and Queen st along with its ensuite and WIR. Features include timber flooring downstairs, ducted heating & cooling, double garage with internal access & alarm system. Only 150m away from Seaholme esplanade, meters away from Seaholme train station & a short walk from Pier St shops & cafe precinct.

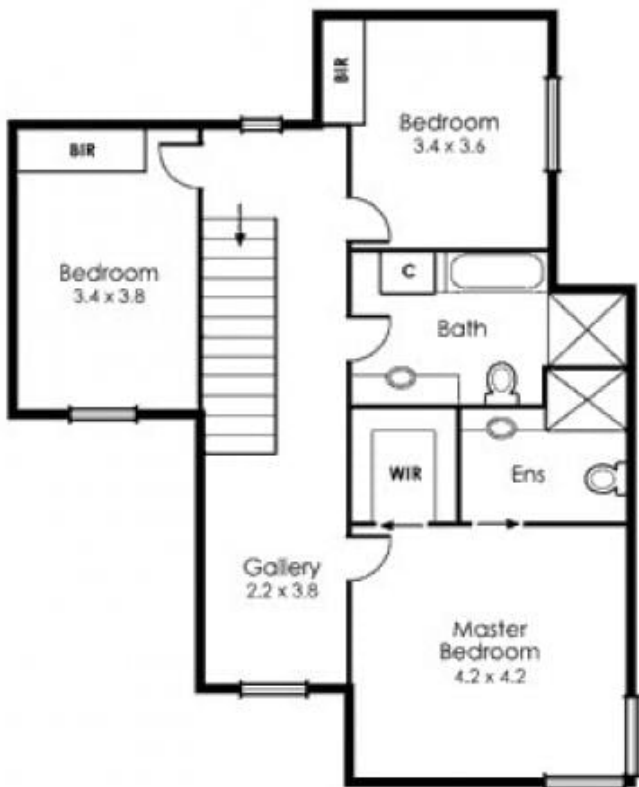
Price : \$1,300,000 - \$1,400,000

Land Size : 310 sqm

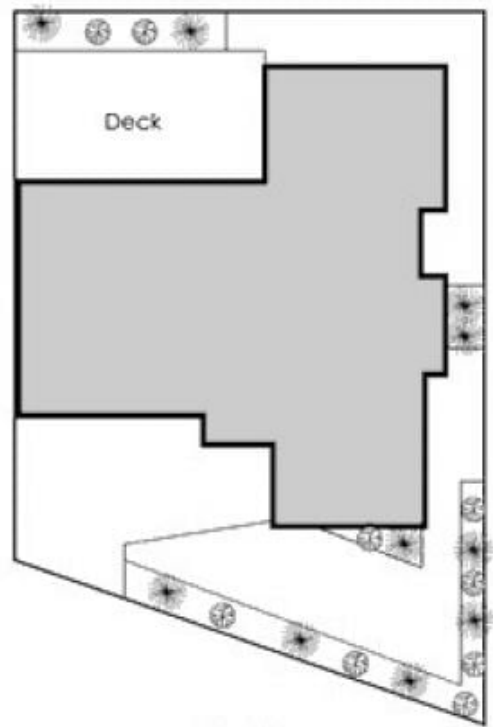
View : <https://www.barlows.com.au/sale/vic/west/seaholme/residential/house/7983357>



Anthony Molinia
03 9398 3888



Top Floor



Site Plan



Ground Floor

