






10b Mitchell Avenue Altona North VIC

2  2  2 

This stunning home provides a ready-made executive lifestyle that's designed to impress. Set on 221m2 approx, this brilliant location are the hallmarks of this spacious dwelling with easy access to everything Altona North has to offer.

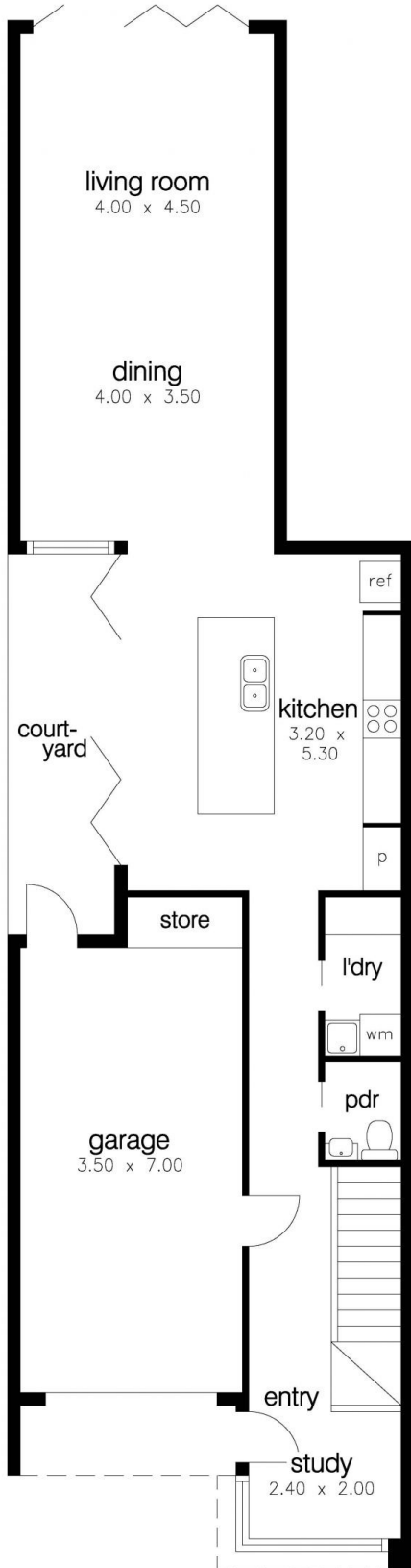
Eloquently featuring 2 large bedrooms (master with ensuite) built in robes and study area downstairs. Other features include an impressively large lounge, open-plan living/dining area, gourmet kitchen with stainless-steel appliances & ample storage. A long list of extras including split system heating & cooling in bedrooms & lounge, timber floors, stone benchtops/vanities & a lovely private backyard.

All this in a great location, only a 10 minute drive to Melbourne's CBD, close to shopping centres and a short stroll to BayFit Leisure Centre and the Golf Course

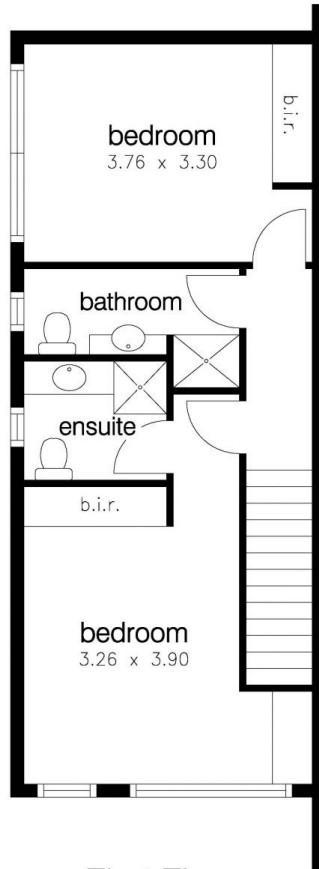
Price : \$790,000 - \$850,000
Building Size : 171 sqm
Land Size : 221 sqm
View : <https://www.barlows.com.au/sale/vic/west/altona-north/residential/townhouse/7952979>



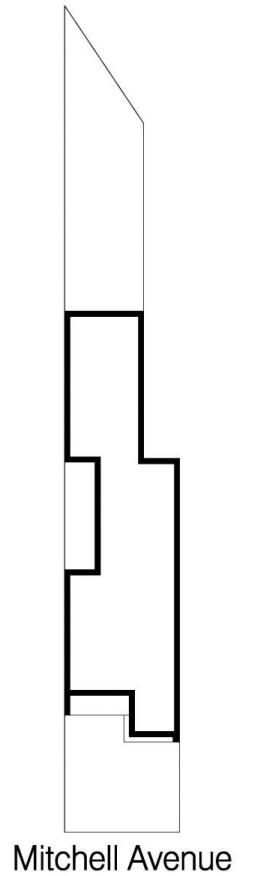
Anthony Molina
03 9398 3888



Ground Floor



First Floor



1 / 10 Mitchell Avenue, Altona North