






7 Lynch Court Altona Meadows VIC

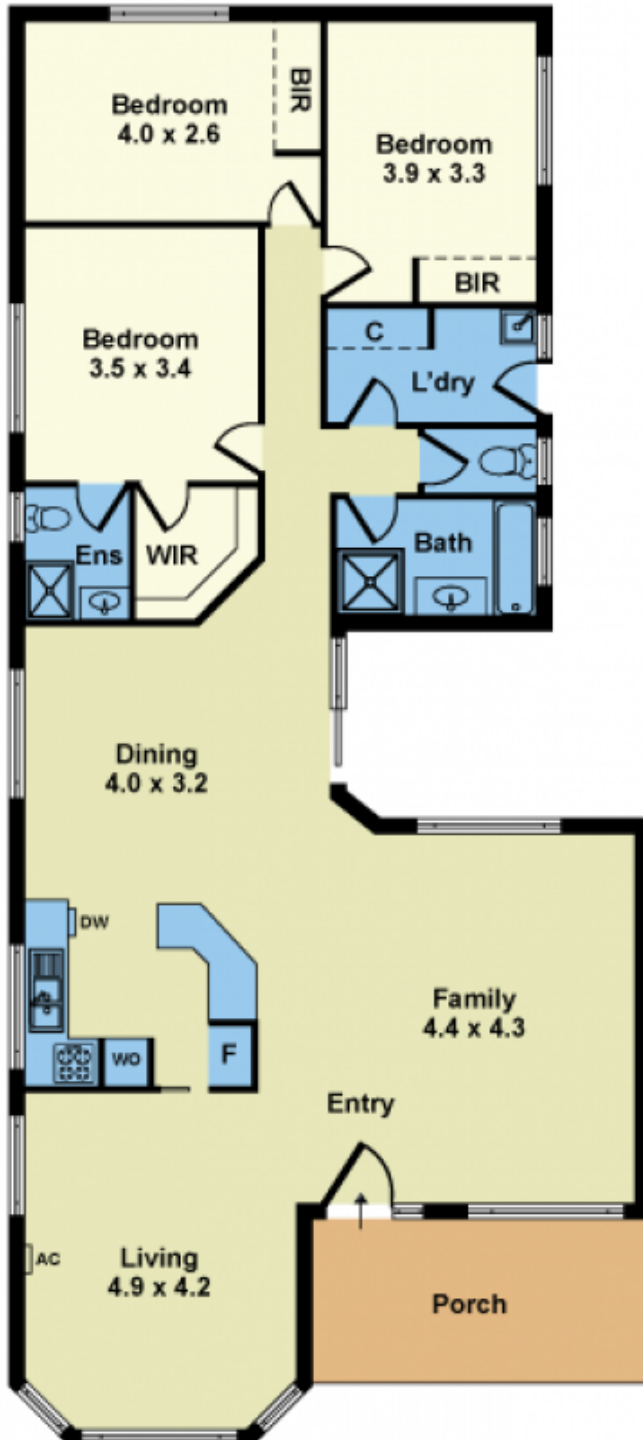
3  2  2 

The perfect family home in a quiet court situated near the wetlands. Comprising three great sized bedrooms (Master with walk in wardrobe & ensuite), open plan kitchen & dining area with two spacious sun filled lounge areas. There is a separate study/studio space that can be used as working from home or as a retreat. Externally the property includes secure parking, paved large outdoor entertainment area with a pergola. Features include dishwasher, ducted heating, split system heating & cooling, solar panels (3.2kw) with Enphase AC battery (1.2kw). Walking distance from shops & falls in Seabrook Primary School attachment zone.

Price : \$ 683,000
Land Size : 486 sqm
View : <https://www.barlows.com.au/sale/vic/west/altona-meadows/residential/house/7615099>



Anthony Molina
03 9398 3888



FLOOR PLAN



SITE PLAN

Whilst every attempt has been made to ensure the accuracy of this floorplan, measurements of doors, windows, rooms and any other items are approximates only. The producer or agent cannot be held responsible for any errors, omissions or misstatements. This plan is for illustrative purposes only and should be used as such.