






35 Chifley Avenue Altona VIC

4  3  2 

With its inspired architecture, stylish appointments and meticulous attention to detail, this just-completed residence sets a new standard when it comes to executive family perfection. Beyond the elegant facade, discover a divine interior showcasing four large bedrooms (including alternate masters on both levels) each with fully fitted robes complemented by two deluxe ensuites, equally opulent main bathroom and guest powder room (fourth WC). A stunning kitchen with 900mm appliances & butler's pantry with second sink. Filled with natural light, this modern masterpiece also includes a large laundry, zoned ducted heating/refrigerated cooling, custom lighting, stone benchtops, double-glazed windows and solid timber floorboards.

Externally the alfresco entertaining area with mains-connected BBQ and private backyard with landscaped garden surrounds is ideal for entertaining...

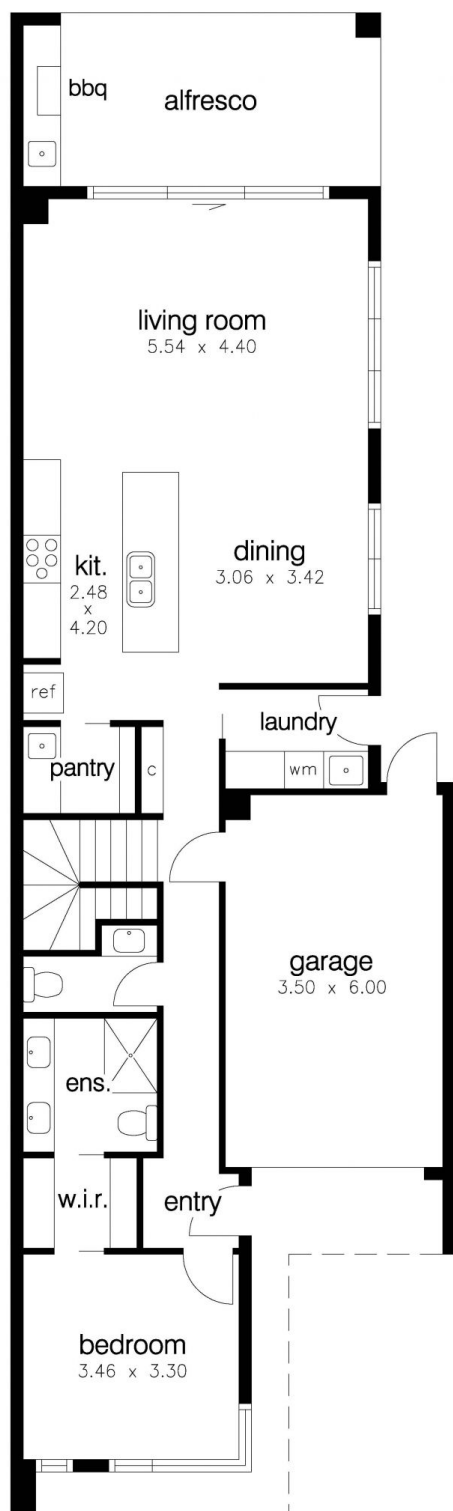
Price : \$ 1,375,000
Land Size : 252 sqm
View : <https://www.barlows.com.au/sale/vic/west/altona/residential/house/7515653>



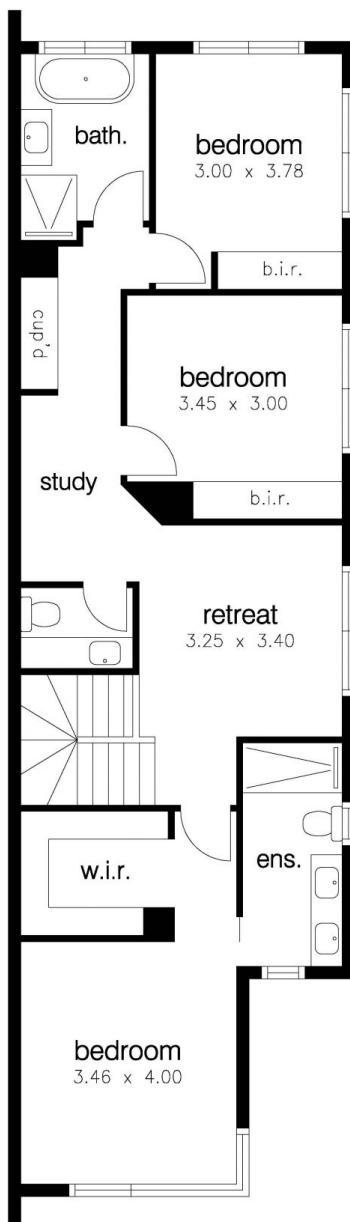
Scott Murdoch
03 9398 3888



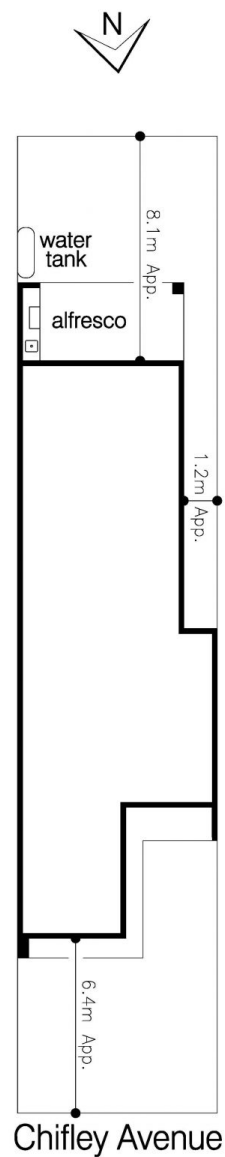
Anthony Molinia
03 9398 3888



Ground Floor



First Floor



35A Chifley Avenue, Altona