



1/16 Cain Court Altona VIC

4  2  2 

Enjoy contemporary living at its very best in this stunning home with a wonderful outlook over Cherry Lake & extensive parkland.

The attention to detail & sense of space is outstanding. Ground level comprises four generous bedrooms, two tastefully appointed bathrooms, laundry & comfortable light filled second living area.

As you move to the first level be prepared for the amazing views, the feeling of opulence & luxury in this open plan space. The high spec kitchen with butlers pantry, entertaining is a pleasure from your protected north facing balcony. Stylish but understated sum up the feeling of the home as you move through taking in the many comfort features.

Externally the home boasts double garage, private sun filled courtyard & direct access to Cherry Lake reserve. Although you feel miles away in this quiet court location, an

Price : \$ 1,451,000

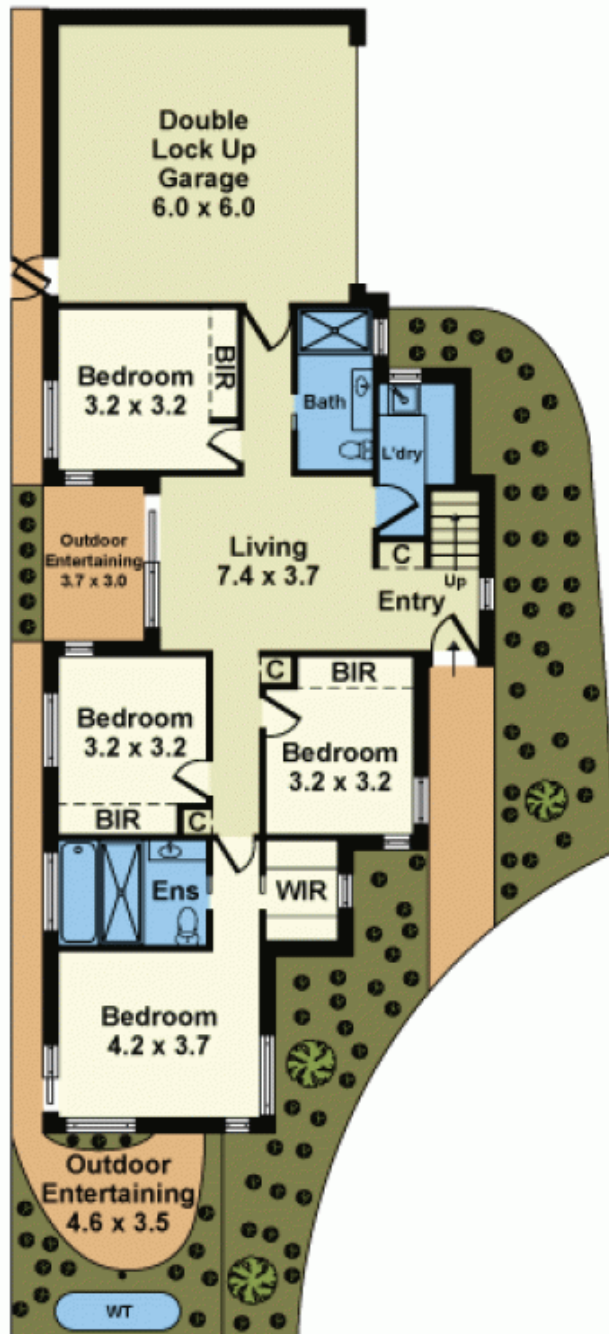
View : <https://www.barlows.com.au/sale/vic/west/altona/residential/townhouse/6015221>



Scott Murdoch
03 9398 3888



Cherry Lake Reserve



GROUND FLOOR



FIRST FLOOR

Whilst every attempt has been made to ensure the accuracy of this floorplan, measurements of doors, windows, rooms and any other items are approximates only. The producer or agent cannot be held responsible for any errors, omissions or misstatements. This plan is for illustrative purposes only and should be used as such.