



31 Tatman Drive Altona Meadows VIC

4 2 4

This family residence with a flexible floor plan is perfect for the growing family. (27.6sq approx) Currently the layout comprises 4 Bedrooms plus study, two bathrooms and 3 living zones.

All the required extras with a new centrally located entertainers kitchen with walk in pantry, 900mm free standing oven, dishwasher all over looking dining area and under cover alfresco area.

Light filled living areas with wood fired "Coonara" and split system AC, the house has also been plumbed for hydronic heating.

No expense spared on two new bathrooms, the main with "Villeroy and Boch bathroom suite" including freestanding bath.

Extensive rear yard with garden sheds large pergola and room to move.

All set on a 788m2 (approx) corner block

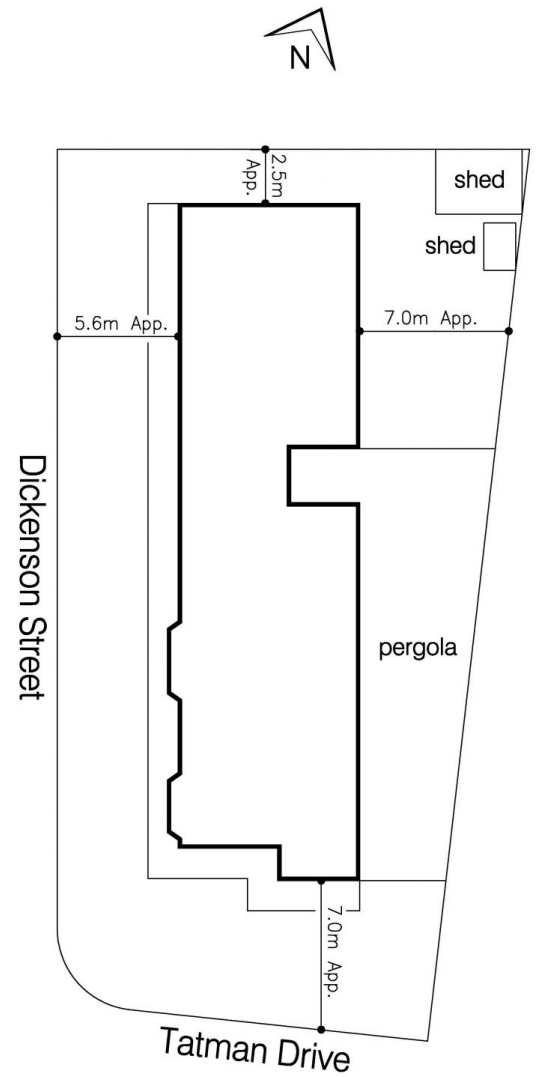
Price : \$ 840,000

Land Size : 788 sqm

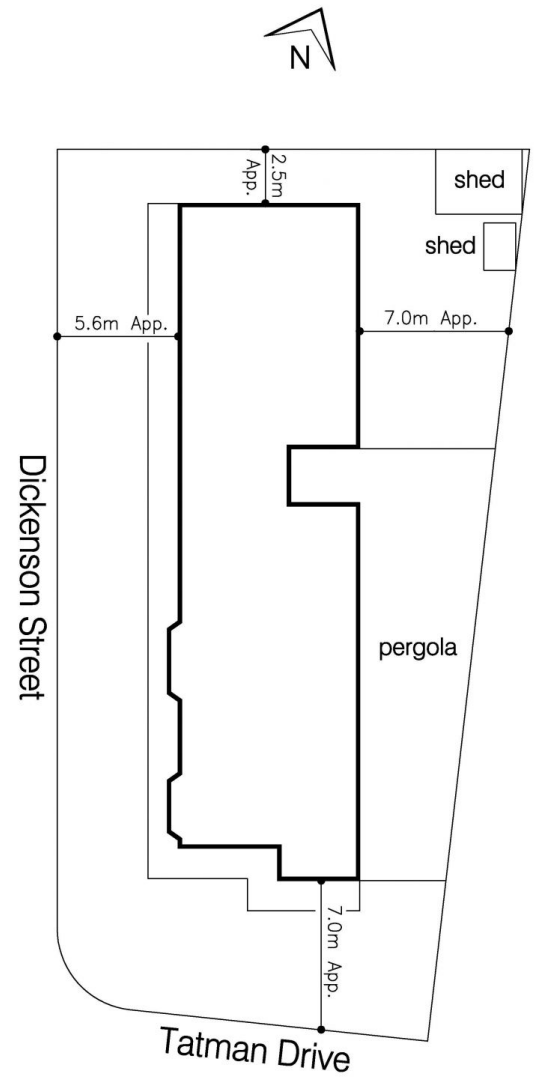
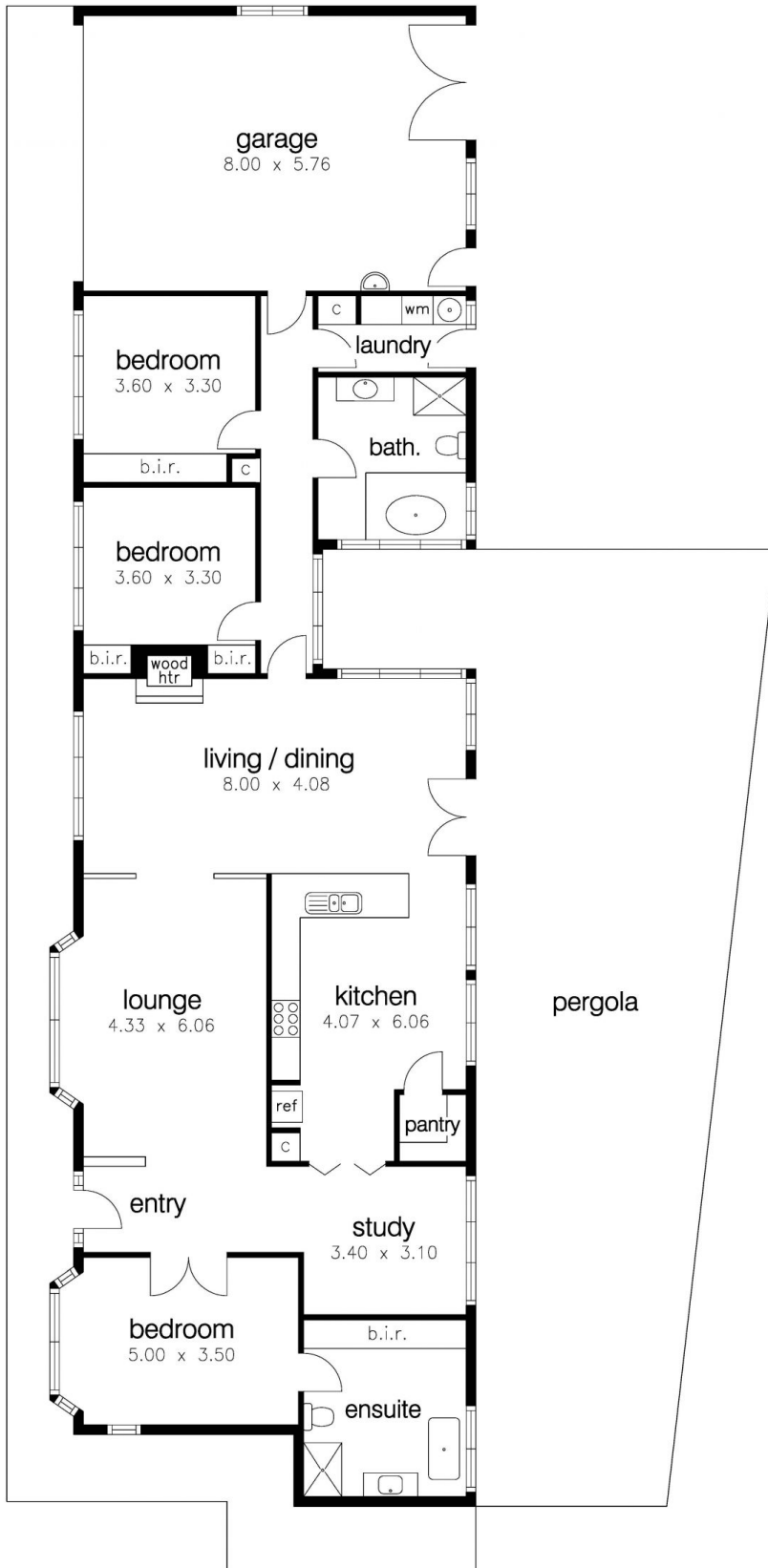
View : <https://www.barlows.com.au/sale/vic/west/altona-meadows/residential/house/5994705>



Peter Weaver
03 9398 3888



31 Tatman Drive, Altona Meadows



31 Tatman Drive, Altona Meadows