



35 Chifley Avenue Altona VIC

3  1  3 

Wonderful opportunity to secure this "first time on offer" family residence.

In almost original condition this property provides excellent potential to showcase your own individual style.

Comprising three bedrooms, central bathroom with separate toilet, sun filled north facing lounge. The kitchen/meals area overlooks the rear sunroom and large rear yard. Gas heating and AC with the potential of "Tassie Oak" floors throughout.

Perfectly positioned, an easy walk takes you to schools, shops, Cherry Lake, beach, Seaholme Railway Station and Pier Street shopping precinct.

With everything at your door step this is a perfect opportunity to renovate the existing home or demolish and further develop the site. Land Size 536m2(approx.)

Price : \$ 910,000

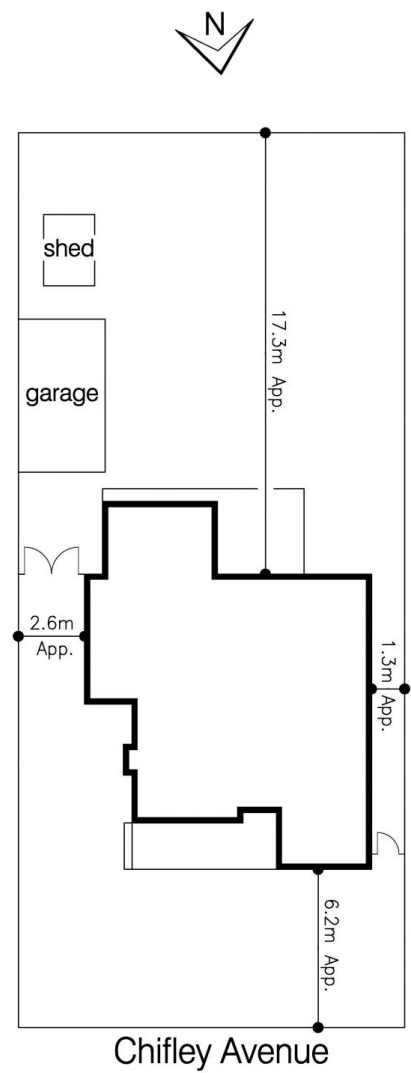
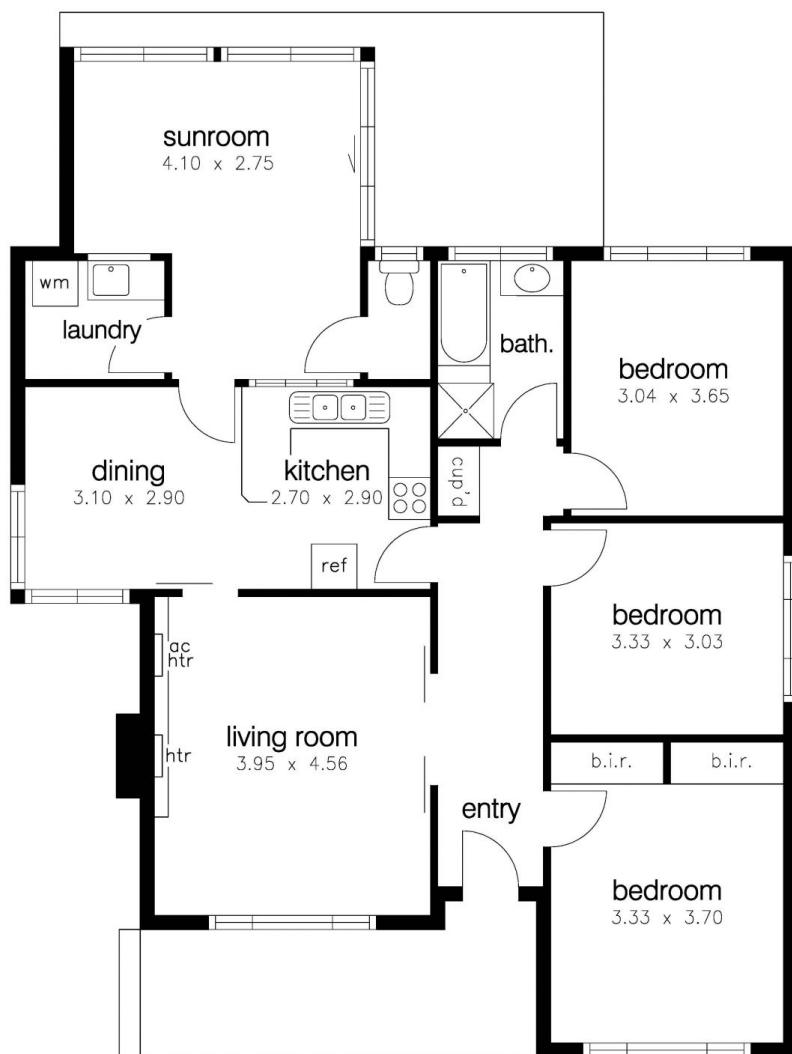
Building Size : 122 sqm

Land Size : 536 sqm

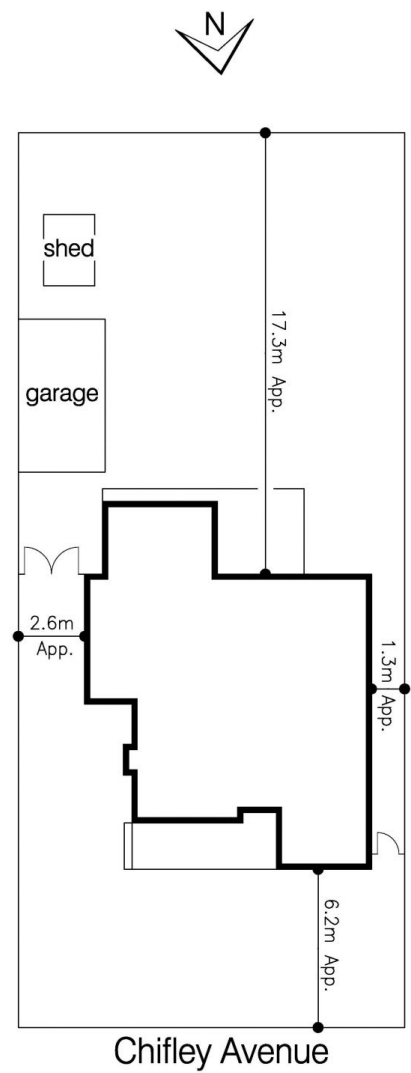
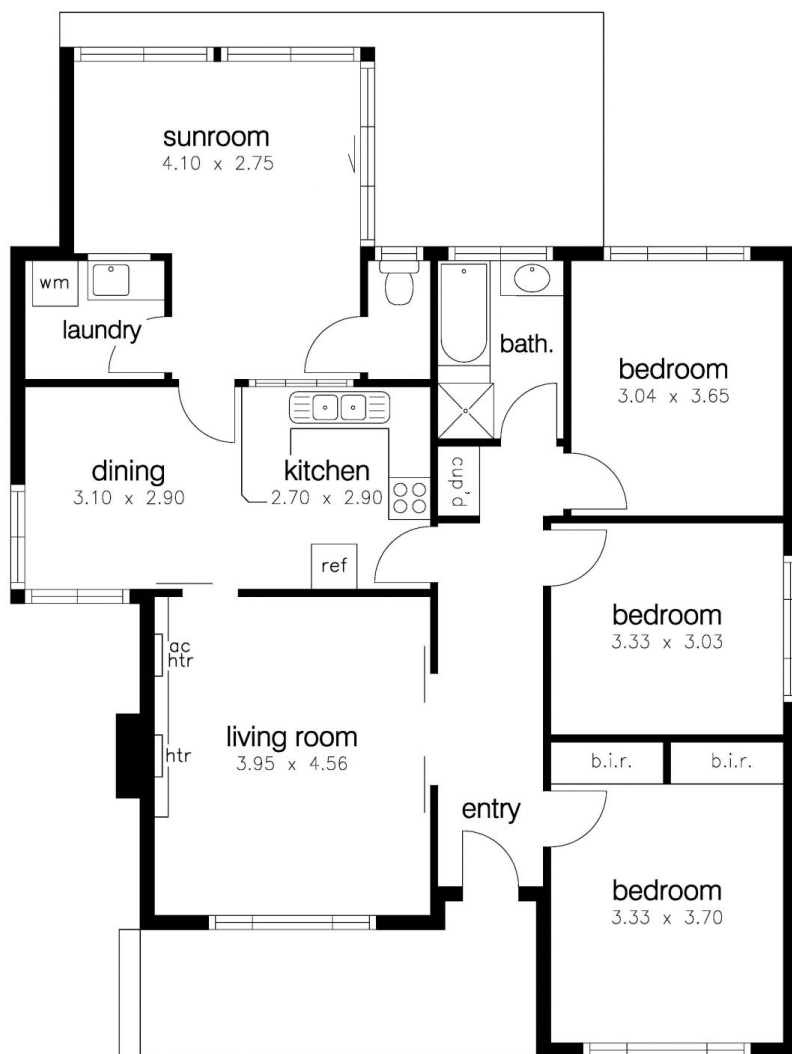
View : <https://www.barlows.com.au/sale/vic/we-st/altona/residential/house/5650204>



Peter Weaver
03 9398 3888



35 Chifley Avenue, Altona



35 Chifley Avenue, Altona